

# E. B. HOFFMAN & SON'S

**Store No. 1**  
57 EAST GREGORY STREET.  
PHONE 825.

## SEMI-MONTHLY PRICE LIST

THESE PRICES GO INTO EFFECT  
**SATURDAY, MARCH 1, 1913,**

**Store No. 2**  
Cor. Coyle and LaRue Streets.  
PHONE 1871.

AND HOLD GOOD FOR NEXT TWO WEEKS, PROVIDING THERE IS NO CHANGE IN THE MARKET DURING THAT TIME

<p><b>A</b></p> <p>Ammonia, per bottle, 50c Asparagus Tips (Libby's), 25c Apple Butter, Yours Truly, 25c Apple Butter, Webster Brand No. 2, 25c Apples, No. 3 can, Numsen, 25c Apricots, Gold Star Brand No. 2 1/2 can, each, 25c</p> <p><b>B</b></p> <p>Oleomargarine, pound prints, per lb., 27c Renovated, per lb., 27c Brookfield, pound prints, per lb., 27c Bacon, sliced, 1-lb. packages, Armour's, 10c Peanut Butter, small glass, Beechnut, 10c Peanut Butter, medium glass, Beechnut, 14c Peanut Butter, large, Premium, 14c Beef, Chipped, Delico Brand, per can, 10c Beef, Chipped, Armour's, 10c Beef, Corned, Veribest, 1-lb. cans, 20c Beef, Roasted, Veribest, 1-lb. cans, 20c Beets, Strawgerry, U. S. Brand, No. 3 can, 14c Buckets, 10-gal., galvanized, 18c Beans, Red Kidney, per lb., 10c Beans, White Wax, No. 2 can, per can, 10c Beans, Lima, Dry, per lb., 10c Beans, White, per lb., 10c Beans Red Kidney, U. S. Brand, No. 2 can, 10c Beans, Stringless, Refugee Brand, No. 2 can, 10c Pork and Beans, V. C. No. 1 can, 14c Pork and Beans, V. C. No. 2 can, 14c Pork and Beans, Campbell, No. 2 can, 12c Pork and Beans, Scott Co., No. 3 can, 10c Blacking, 2-in-1, 10c Blackberries, No. 2 can, for pies, 10c Brush, Scrub Palmetto, small, 10c Brush, large, 20c Buckwheat, Stobler's, per pkg., 25c Three for 25c</p> <p><b>BROOMS AND MOPS.</b></p> <p>Painted Handles, 5 strings, 50c Special, 5 strings, 40c No. 4 strings, 40c Our Leader, 5 strings, 40c Mops, 25c</p> <p><b>BAKING POWDER.</b></p> <p>Rumford, 8-oz., 15c Rumford, 16-oz., 25c Royal, 8-oz., 15c Royal, 16-oz., 25c Good Luck, 16-oz., 25c Campbell, 8-oz. for 10c Campbell 16-oz., 25c</p> <p><b>C</b></p> <p>Candies, 1 for 25c Chicken, boned, Armour's Veribest, 32c</p>	<p><b>CEREALS.</b></p> <p>Corn Flakes, Kellogg, per pkg., 10c Oat Meal, Royal Seal (can), 13c Oat Meal, Victor Toy, each, 10c Grape-Nuts, 14c Cream of Wheat, 14c Postum, small, 10c Postum, large, 25c Postum, Instant, 25c Tapioca, Pearled, 10c Shredded Wheat Biscuits, 12c Sago, per pkg., 10c Bird Seed, per pkg., 10c</p> <p><b>CHOCOLATE and COCOA</b></p> <p>German Sweet, 1/2-lb. pkg., six for, 25c German Sweet, 1/2-lb. pkg., 9c or 3 for, 25c Bakers Baking, 1/2-lb. pkg., 18c Cocoa, Nelson, 1-1/2-lb. cans, 23c Cocoa, Baker's, 1/2-lb. cans, 23c</p> <p><b>COFFEE.</b></p> <p>Santos, 6-oz. pkg., 10c Cafe du Monde, 1-lb. cans, per can, 30c Cafe du Monde, pails, per pail, 1.00 El Dedito, pure, 35c French Opera, per bucket, 1.00 Ground Coffee bulk, per lb., 25c Golden Rio, Gulf City, 1-lb. pkg., 23c 16 to 1, Gulf City, 6-oz. pkg., 10c Peaberry, per lb., 25c Green Rio, per lb., 23c Moore's, 4-lb. pails, 1.00</p> <p><b>CATSUP.</b></p> <p>Libby's per bottle, 25c Hull Head, pure, per bottle, 25c Sellers', medium, bottle, 25c Catsup, Red Snapper, 25c</p> <p>Clothes Pins, 3 doz. for, 10c Clothes Line, small, 10c Clothes Line, large, 10c Cracker, 10c Cheese, Creamery, per lb., 25c Cottolene, 4-lb. buckets, 55c Cottolene 10-lb. buckets, 1.40 Corn, Flag, Sweet Kernel, two for, 13c Corn, La Bannon, No. 2 can, per can, 25c Corn Beef Hash, Very Best, per can, 25c Cherries, Red Pitted, Faultless Brand, fancy quality, No. 2 can, 28c Cherries, Maraschino, pts., 40c Cherries, Black, Gold Star Brand, 2 1/2 lb. can, 28c Cherries, Red Pitted, Flag Brand, No. 2 can, per can, 27c</p> <p><b>CHICKEN FEED.</b></p> <p>Scratch, Corn, 100-lb. sacks, 2.00 Scratch Feed, per pk., 30c</p>	<p><b>CHICK FEED, per pk., 35c</b></p> <p>Corn, per bu., 85c Oats, 52-lb. bu., 55c Chops, 70c Beef Meal, per lb., 50c Bone Meal, per lb., 50c Oyster Shell, Crushed, per lb., 50c Crystal Grit, per lb., 50c Rum, per bu., 50c Shorts, per lb., 50c Alfalfa Meal, per lb., 50c Cotton Seed Meal, per lb., 50c</p> <p><b>CONKEY'S REMEDIES.</b></p> <p>Limber Neck, per pkg., 50c Laying Tonic, large pkg., per pkg., 50c Laying Tonic, small size, 50c Gape Cure, 50c Lice Liquid, pint cans, 50c Poultry Tonic, 50c Lice Powder, large size, 50c Chicken Fox Remedy, 50c Sasley Leg Remedy, 50c Poultry Worm Remedy, 50c White Diarrhoea Remedy, 50c Roup Cure, small size, 50c Roup Cure, large size, 50c Cholera Cure, small size, 25c Cholera Cure, large size, 25c Lice Powder, small size, 10c Lice Powder, large size, 25c Lice Liquid, qt. cans, 35c Nose Lint, 10c Head Lice Ointment, small, 10c Head Lice Ointment, large, 25c Bronchitis Cure, 50c Perfect Sprayers, each, 25c Stock Vigor, 25c Healing Powder, 50c Colic Remedy, 50c Worm Remedy, 50c Fly Knocker, qt. cans, 55c Fly Knocker, gal. cans, 1.00 Call and get sample of lice powders and poultry book FREE.</p> <p><b>DRUGS AND EXTRACTS</b></p> <p>Borax, 1-4 lb. 20 Mule Team, 50c Epsom Salts, 50c Castor Oil, bottle, 5c and 10c Paragoric, 50c Turpentine, 50c Extracts, We-Li-Ki, Lemon and Vanilla, 50c Extracts, Sauer's Lemon and Vanilla, 50c</p> <p><b>F</b></p> <p>Fish Flakes, No. 1 can, 50c</p>	<p><b>FLOUR.</b></p> <p>Obelisk, 12 lb. sacks, 45c Obelisk, 24 lb. sacks, 80c Swans-Down, 12 lb. sack, 45c Swans-Down, 24 lb. sack, 80c Cream of Patent, 12 lb. sack, 45c Cream of Patent, 24 lb. sack, 80c White Wheat, per lb., 10c Merry Widow, Self Rising, 24 lb. sack, 80c Merry Widow, 12 lb. sacks, 45c</p> <p><b>M</b></p> <p>Meal, Gonzales, 11-1-1/2 lb. pks., 25c Meal, Gonzales, 1-2 lb. sack, 50c Machine Oil, 50c Matches, Crescent, 6 pkgs. for, 25c Milk, Winger, per can, 11c Milk, Eagle Brand, per can, 16c Milk, Fat Evaporated, small size, 25c Milk, Fat Evaporated, large size, 25c Milk, Pet Co. or 3 for, 25c Mucilage, per bottle, 50c</p> <p><b>MEATS.</b></p> <p>Breakfast Bacon, Sunlight Brand, 8 1/2 pound, per lb., 25c Hams, Swift Premium, 8 to 10 lbs., per lb., 21c Dry Salt Sides, per lb., 15c Hams, Electric, per lb., 15c Shoulders, D. S., per lb., 14c Bacon, Wrapper, per lb., 18c</p> <p><b>MUSTARD.</b></p> <p>Colburn, Dry, 50c Dove Brand, Chili Mustard, 10c</p> <p><b>Macaroni and Spaghetti</b></p> <p>Macaroni, small packages, 5c, 6 for, 25c Macaroni, large, per lb., 10c Spaghetti, small packages, 5c, 6 for, 25c Spaghetti, loose, per lb., 10c</p> <p><b>O</b></p> <p>Okra and Tomatoes, No. 2 can, per can, 10c Okra, No. 2 can, St. Bernard Brand, 10c Okra, No. 1 can, Fresh Draft, 10c Okra and Tomatoes, Fresh Draft, No. 1 can, 10c Okra, Dragon Brand, No. 2 can, 10c Oysters, No. 1 can, 5c or 3 for, 25c Oil, per gal., 12c Oil, Wesson Cooking, qt. cans, 25c Olive Oil (Plagniol), pints, 30c Onions, per lb., 10c Old Cans, 1 gal., 20c</p> <p><b>P</b></p> <p>Pineapples, Clipper Brand, No. 1 can, per can, 10c Okra, Dragon Brand, No. 2 can, 10c 2 can, per can, 13c, 2 for, 25c Peaches, Horse Head Brand, No. 3 can, 10c Peaches, Bahama Brand Sliced, No. 1 can, 10c Peaches, Maiden Brand, Cal. Yellow, 20c Peas, (Cal.), Dry, per lb., 18c Peas, Blue Label, per lb., 18c Potatoes, Irish, per lb., 14c Pumpkins, Old Mammy, No. 3 can, 10c</p>	<p><b>SCOURING.</b></p> <p>Sapolio, per bar, 10c Bon Ami, per bar, 10c Pioneer, per bar, 10c Scourall, per bar, 10c</p> <p><b>SALT, 2 lb. pkg., 10c</b></p> <p>Salt, Coarse, 5 lbs. for, 25c Strawberries, for Pies, No. 2 can, 10c Starch, per lb., 10c Starch, Pearl, (Bull) 6 lbs. for, 25c Starch, Celluloid, per pkg., 25c Starch, Corn, 1 lb. pkg., per can, 10c Shrimp, No. 1 can, 10c Sardines, La Sirene Brand, in oil, per can, 10c Sardines, Game Cock (Mus.) 5c, 3 for, 25c Sardines, American, in Oil, 10c Stews Polish Enamels, per can, 25c Soda, Arm &amp; Hammer, 12 oz. pkg., 10c Soda, Sal, per lb., 10c Soda, Campbells, No. 1 can, 10c</p> <p><b>SYRUP.</b></p> <p>Alaga, 1-1/2 lb. cans, 18c, 2 for, 25c Alaga, 3 lb. cans, 18c, 2 for, 25c Alaga, 1 gal., 63c Karo Corn Syrup, 3 lb. cans, per can, 10c Karo Corn Syrup, 5 lb. cans, per can, 21c Karo, Gal. cans, per can, 42c Car-Wi-Co, 1 gal., 60c</p> <p><b>SAUCE.</b></p> <p>Durkees, Challenge Brand, per bottle, 10c Chili Pepper, per bottle, 10c Lee &amp; Perrin's, 25c Red Snapper, per can, 25c Pepper (Frank's) Red and Green, per can, 25c</p> <p><b>SALAD DRESSING.</b></p> <p>Durkees, small, 10c Durkees, medium, 25c</p> <p><b>SAVON.</b></p> <p>Octagon, 6 bars for, 25c Ideal, 5c bar, 2 for, 10c Napha, 5c bar, 2 for, 10c Fairy, per bar, 10c Ivory, per bar, 10c California, Medicated, per bar, 10c Grand Pa's (Tar) per bar, 10c Lava, per bar, 10c Tribby, Twin, double bar, 10c Savon, 5c bar, 2 for, 10c Toilet, (4 bars to the box), 10c Toilet 4-Buttermilk Castile, per box, 10c</p> <p><b>SOAP POWDER.</b></p> <p>Star Napha, per pkg. 5c, 6 for, 25c Dutch Cleanser, per can, 5c, 2 for, 25c Light House, Cleanser, per can, 50c</p> <p><b>SPICES.</b></p> <p>Allspice, ground, per pkg. 5c or 3 for, 10c Cloves, ground, per pkg. 5c or 3 for, 10c Cinnamon, ground, per pkg. 5c or 2 for, 10c Red Pepper, ground, per pkg. 5c or two for, 10c Thyme, ground, per pkg. 5c or two for, 10c Pepper, Black, ground, per lb., 25c Cloves, grain, per lb., 20c Allspice, grain, per lb., 20c Nutmegs, 3 for, 10c Poultry Seasoning, per bottle, 10c Ginger, ground, per pkg. 5c, 2 for, 10c Ginger, whole, per pkg. 5c, 2 for, 10c Pickling Spices, per pkg. 5c, 2 for, 10c Cinnamon, whole, per pkg. 5c, 2 for, 10c</p> <p><b>T</b></p> <p>Tomatoes, No. 3 Clipper, 13c, 2 for, 25c Tomatoes, Clipper, No. 2, 16c, 3 for, 25c Trite, per can, 18c Tongue, 1-2 lb. cans, per can, 20c</p> <p><b>V</b></p> <p>Vinegar, bbl. per gal., 25c Vinegar, Elko Brand, 1 gal. contain-ers, pure apple cider, 50c Vinegar, Lamoco Brand, per bottle, 10c</p>
---	---	--	---	---

**We Make THREE Deliveries Daily. First, at 9 a. m. Second, at Noon. Third, at 4:00 p. m.**

**Join the Pocket Savings Throng**

No admission fee.  
No dues to pay.  
No rules to observe.

Simply call at the bank and receive free a pocket coin container.

Slip it into your pocket and drop a coin into it every now and then—every day if you can.

If you register the amount as you go along you will be surprised to find how quickly small coins multiply.

The containers are free—you don't have to open an account to receive one. Just say you saw this advertisement in The Journal.

**American National Bank**

of Pensacola,  
Government Depository.

**TERSELY TOLD.**

**\$5.00 REWARD.**

The Journal will pay \$5.00 reward for evidence sufficient to convict any boy or person found stealing subscribers' papers after delivery of same by carrier.

Friday, during the thunder storm, the home of C. W. Oliver on the corner of Sixteenth avenue and Jackson street, caught fire from lightning and the ceiling of one of the rooms was slightly damaged. The fire department responded immediately and extinguished the flames without the use of water.

Miss Elsie Catlett, of New York, has arrived in the city, accompanying Mr. and Mrs. J. Hirschkovitz on their return from New York, and other eastern cities, where they have been purchasing spring stock. Miss Catlett is trimmer for the La Mode.

Mr. E. W. Thomas and A. E. Austin, of Liggett & Meyers Tobacco Co., are in the city for a few days.

S. J. Harvey, president of the First National Bank of Milton, was in the city yesterday on his way to Wash-

We have them—Men's Suits for \$15, sold on easy terms—\$5.00 cash and \$1.00 a week. See our window. Galin's, 26 South Palafox street.

**RAILS**

OUR SPECIALTY  
We Buy and Sell All Sections.  
Metzer Brothers,  
MOBILE, ALA.

Ington to witness the inauguration Tuesday.

J. Bowers Campbell and Paul Carter, two prominent attorneys of Marianna, were in the city yesterday on legal business.

A regular meeting of the board of public works will be held at 6 o'clock Monday evening in the office of the city clerk.

Fresh fish. Phone 1357.  
H. & H. Market & Grocery.

**NATIONAL BANKS ARE IN A FINE CONDITION**

Washington, Mar. 1.—Receivers of the 7,425 national banks showed a material improvement on February 4, as compared with the stringent period of November but were not as great, however, as in February of last year, according to returns to the comptroller of the currency.

**POSTOFFICE DEPARTMENT NOT TO CLOSE AGREEMENTS**

Washington, Mar. 1.—The postoffice department does not deem it practicable to conclude agreements for two-cent letter postage at this time with Norway, Sweden, Denmark, the Netherlands, nor any foreign country, according to a memorandum of the department which President Taft forwarded to the house with a message.

**Do You Feel Chilly?**

OR

**Feverish and Ache all Over**

Feel worn out—blue and tired? Don't let your cold develop into bronchitis, pneumonia or catarrh. The reliable alternative and tonic which has proven its value in the past 40 years is

**DR. PIERCE'S Golden Medical Discovery**

Restores activity to the liver and to the circulation—the blood is purified, the digestion and appetite improved and the whole body feels the invigorating force of this extract of native medicinal plants. In consequence, the heart, brain and nerves feel the refreshing influence. For over 40 years this reliable remedy has been sold in liquid form by all medicine dealers. It can now also be obtained in tablet form in \$1.00 and 50c boxes. If your druggist doesn't keep it, send 50 one-cent stamps to R. V. Pierce, M.D., Buffalo.

The Common Sense Medical Adviser—a book of 1008 pages—answers all medical questions. Send 31c in one-cent stamps to R. V. Pierce, M.D.

### SOCIETY MAN IN NEXT LOWER HOUSE



Peter Golet Gerry is one of the young society men who have been elected to the new congress. He is a millionaire and married one of Washington's famous beauties, Miss Martha Townsend. He represents the second district of Rhode Island.

**MORE PAY FOR OFFICERS OF THE AVIATION CORPS**

Washington, Mar. 1.—The conference report on the army appropriation bill was adopted by the senate today providing a thirty-five per cent increase in pay to officers detailed to the aviation corps of the army.

### FINAL RALLY OF JONES MEN

IT WILL BE HELD IN SEVILLE SQUARE MONDAY NIGHT, AND A NUMBER OF LOCAL MEN WILL MAKE SPEECHES.

The final rally of the Representative Government League, supporting the Jones form of city charter, will be held in Seville square Monday night. A band has been secured and the speaking will commence promptly at 8 o'clock.

This will close the campaign in Pensacola, and the Jones charter adherents will have a number of speakers for the occasion. Among them will be Senator John Stokes and the league invites any citizen to be present and ask Senator Stokes any questions he may desire regarding the two charters.

### Lenten Tables

Are easily supplied here. Housewives, who are sometimes puzzled what to have for the table, can facilitate matters a lot by visiting our store and looking over the great assortments in stock, or by phoning us for suggestions. We'll gladly help you.

Dewey Coffee—Roasted fresh daily by this store—is growing in popularity every day. Won't you try it and then you can always pleasantly say "Dewey Coffee."

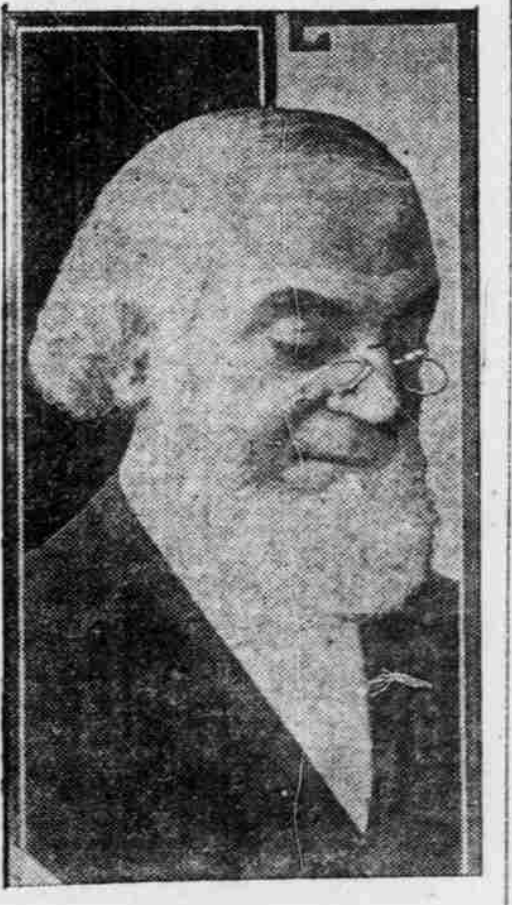
**McHugh Grocery Co.**

Phones, 1627-1628.

### RUSSELL COMING TO PENSACOLA

WELL-KNOWN BIBLE LECTURER WHO SPEAKS AT THE OPERA HOUSE FRIDAY NIGHT, MARCH 7TH, AT 8 P. M.

Pastor Russell, the famous Brooklyn divine, will deliver a free lecture in the opera house, Friday night at 8 p. m., on the topic "Beyond the Grave." Those in charge of local arrangements expect that a great crowd will hear the speaker. The opera house was secured for the occasion because it affords a common or neutral place of meeting where people of va-



**PASTOR RUSSELL.**

rious religious views, Protestant or Catholic, Jewish or skeptic, can meet to hear and think over statements made by one of the world's most celebrated independent Bible lecturers.

At present Pastor Russell is serving in the London Tabernacle, Brooklyn Tabernacle, and Washington Temple congregations, having assistants in each place. Ordinarily he serves two months in the spring and two months in the fall abroad in connection with the London Tabernacle work. When in America he is expected to serve the Brooklyn Tabernacle congregation on the first Sunday of each month.

Washington Temple the last Sunday in each month, other Sundays being devoted to outside appointments.

Pastor Russell is president of the Watch Tower Bible and Tract Society, accepting his maintenance from them and accepts no salary from any congregation nor fee for any public lecture. In harmony with this policy he accepts only such invitations to deliver public lectures where opera house or auditoriums have been secured and where seats are advertised free and no collections taken up.

His lectures are non-sectarian and

are delivered for the purpose of encouraging Bible study. A cordial invitation has been extended to all to hear Pastor Russell in his free lecture.

When calling for a plumber, ask for a Union man, and your work will be done by a man, who has passed an examining board of tried plumbers.

**"White" Bread Looks Fine!**

But it lacks Food Value. The color proves it. What you should have is the "Creamy" loaf made from

**Pillsbury's Best Flour**

On this all Food Experts agree. This flour is ground from "hard" wheat. It is rich in "gluten." The loaf shows it. It fairly glows with Vigor—Nourishment. Its color is a rich cream.

Choose Pillsbury's Best Flour, madam! Buy for nourishment as well as good-looks.

ITS DISTRIBUTORS ARE

**Consolidated Grocery Co.**  
Pensacola, Fla.